

EQUALITY FORUM

**MONDAY, 13TH FEBRUARY 2017, 6.30 PM
LANCASTRIAN, TOWN HALL, CHORLEY**

Please find enclosed the presentation slides for the above meeting.

Agenda No	Item	
3	OUR HEALTH OUR CARE	(Pages 3 - 18)
5	REVISED PRIVATE SECTOR HOUSING ASSISTANCE POLICY	(Pages 19 - 26)

GARY HALL
CHIEF EXECUTIVE

Electronic agendas sent to Members of the Equality Forum

If you need this information in a different format, such as larger print or translation, please get in touch on 515151 or chorley.gov.uk

This page is intentionally left blank



Our Health Our Care

Equality Forum Programme Update

Who are we?

We are working together...



Lancashire Care **NHS**
NHS Foundation Trust

NHS
Greater Preston
Clinical Commissioning Group

Lancashire
County Council

NHS
Chorley and South Ribble
Clinical Commissioning Group

Lancashire Teaching Hospitals **NHS**
NHS Foundation Trust

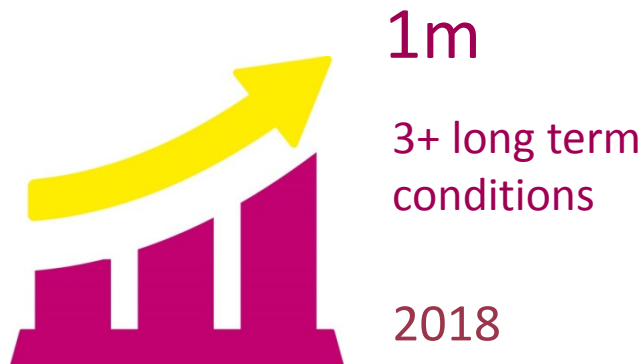
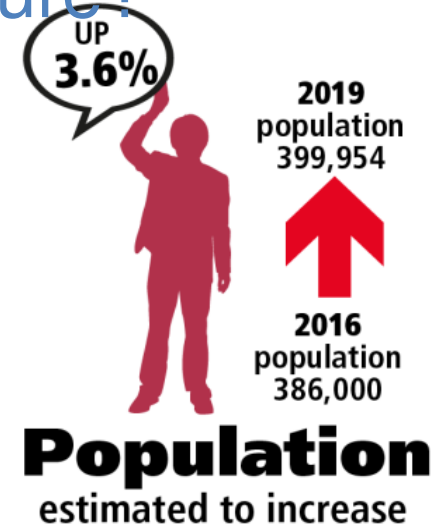
Our purpose is to:
Design a new model of health and care to ensure that our services are **ready for the future**

Why is Change needed?

Why are we not ready for the future?

There are changes to local populations:

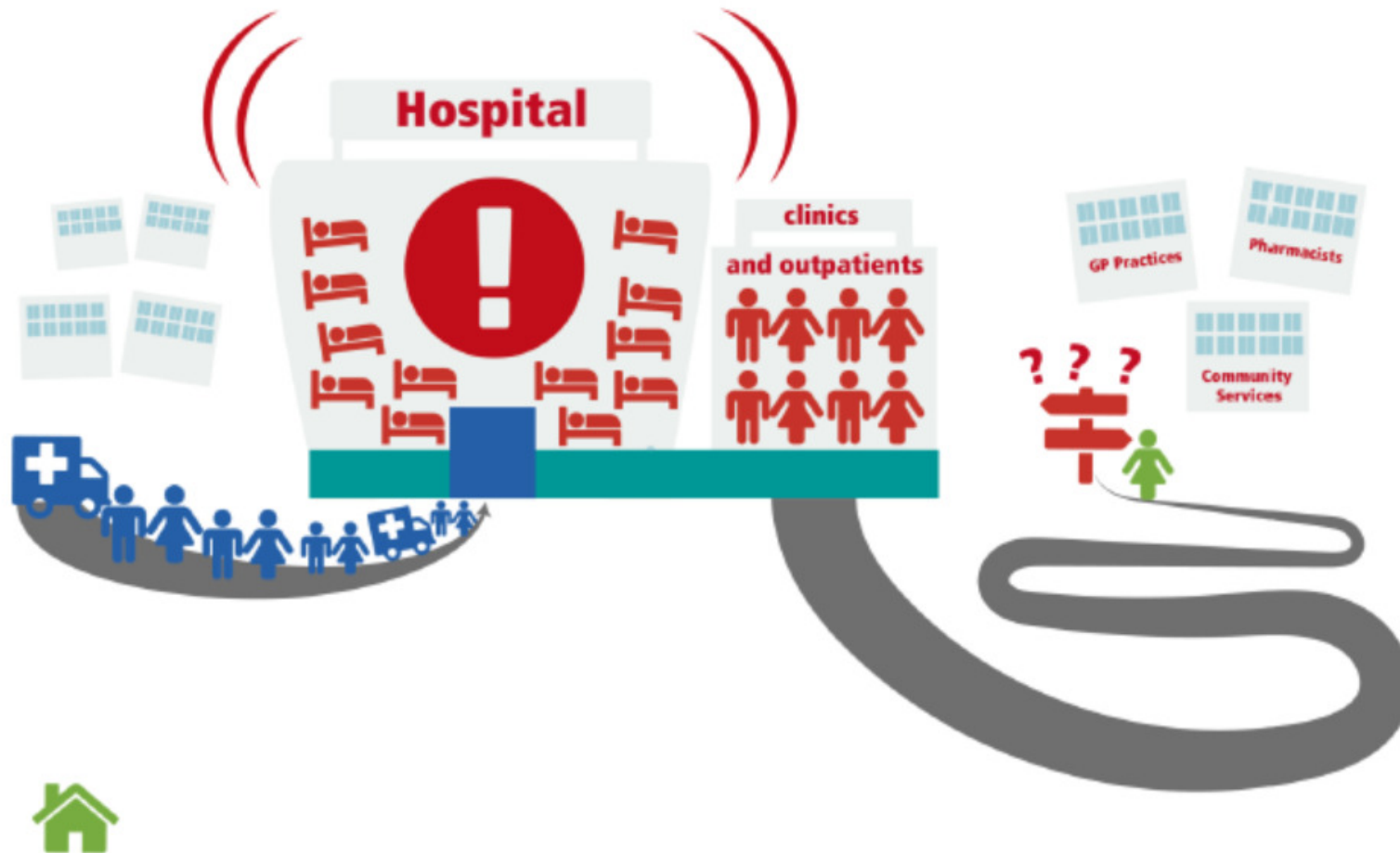
- The local population is growing and living longer
- Increasing long-term conditions
- Preventable illnesses are increasing



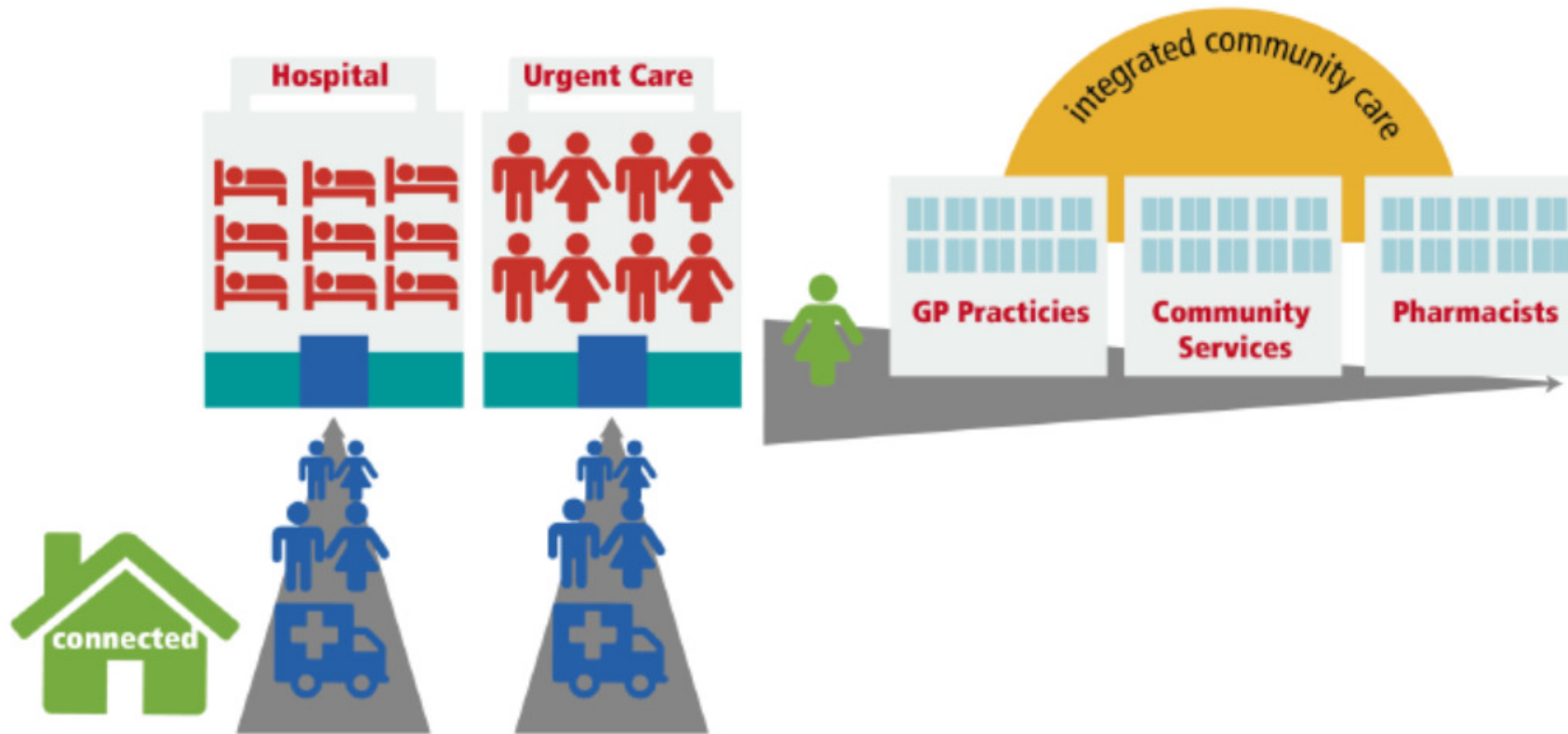
Our journey so far...

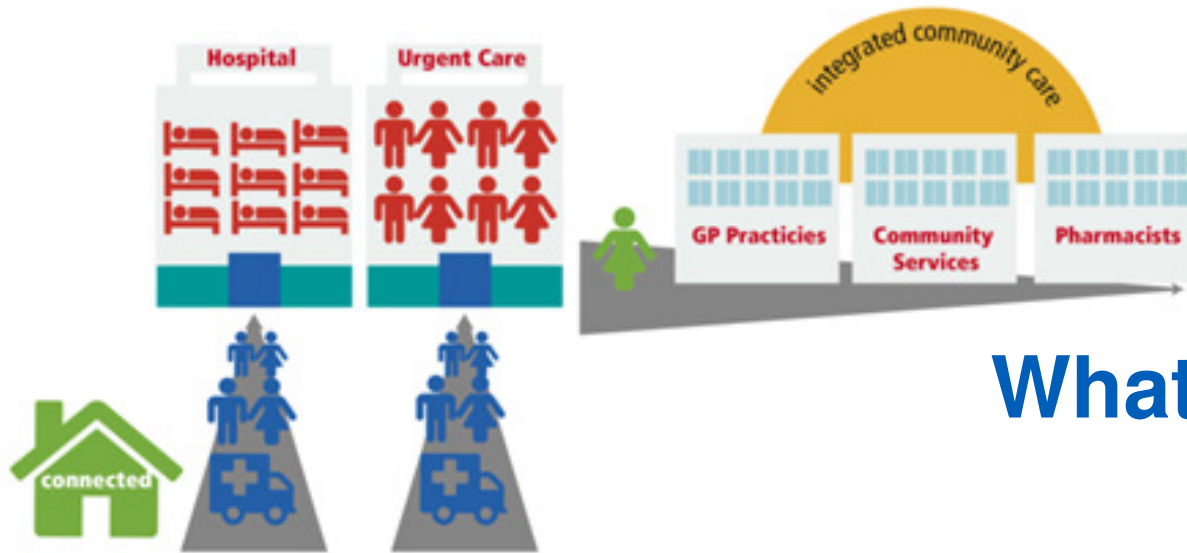


How our health and care services currently work



How could this be changed?





**We asked:
What do you think?**

People have told us that they think it is a good idea for health and care services to work together and that these other things are important:

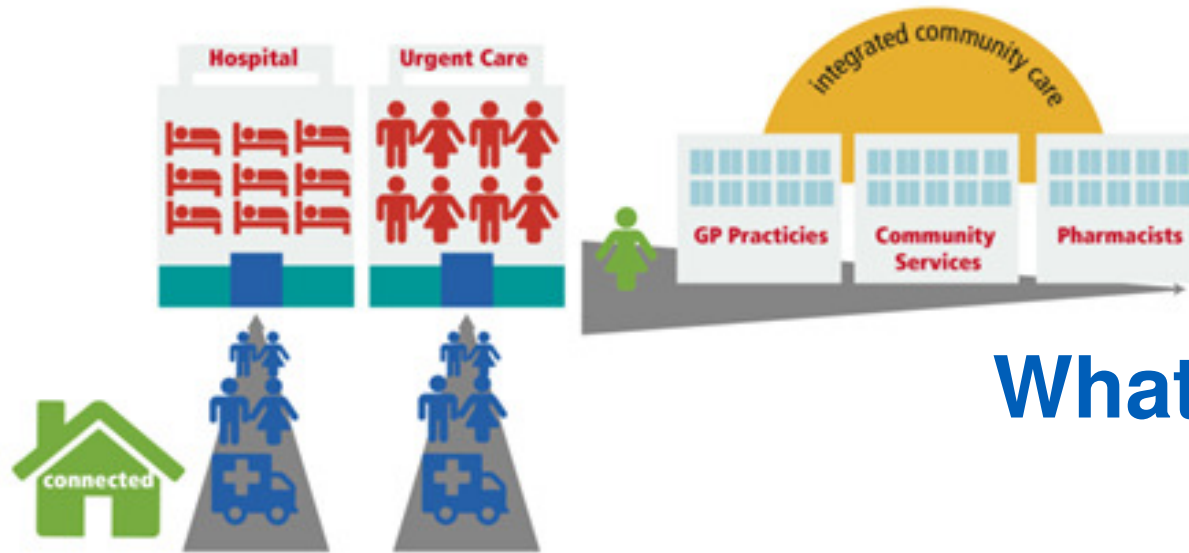
- Information and better communication
- NHS should remain free at point of delivery
- IT and technology should be used more
- The changes need to enhance care and improve outcomes

People talked about different places where care could be provided.

**We asked:
What do you think?**

In total 318 comments were recorded, most comment placed services in the community:

- **‘Your regional specialist centre’** discussed 17 types of services, most commonly: **Heart treatment, radiotherapy and major surgery**
- **‘Your local hospital’** discussed 21 types of services, most commonly: **Mental health support, minor surgery, heart treatment and chemotherapy services**

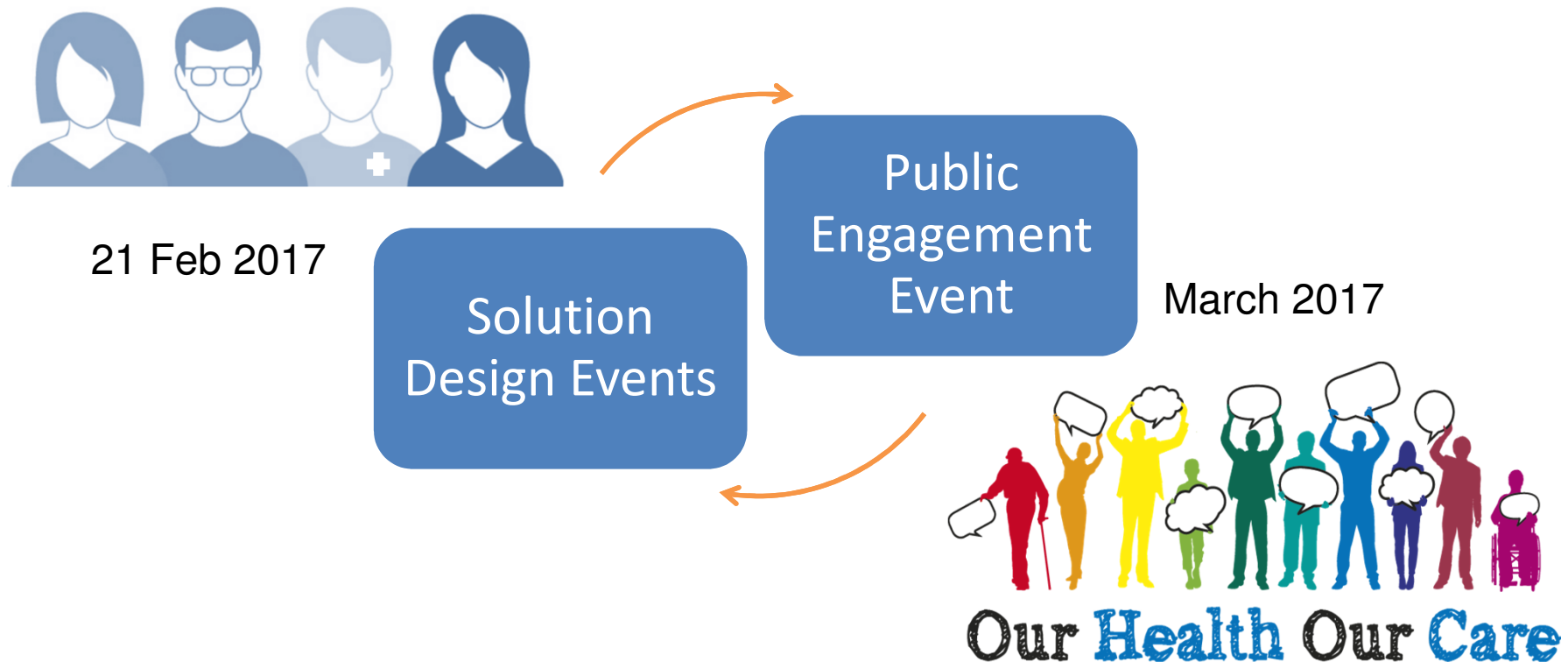


**We asked:
What do you think?**

- ***‘Near your home – not in hospital’*** discussed 27 types of services, most commonly: **Physio and pre-op assessments**
- ***‘In your GP practice’*** discussed 26 types of services, most commonly: **Blood tests and physio services**
- ***‘In your home’*** discussed 21 types of services, most commonly: **Mental health support, diabetes monitoring and district nursing services**

So what next?

The ideas are being developed ready to be shared in March 2017 at public engagement events near you.



Want to get involved?

Weds 8th March 2017

2-4pm Gujarat Centre,

South Meadow Lane, Preston, PR1 8JN

6-8pm Health Academy 1,

Royal Preston Hospital, PR2 9HT

Thur 9th March 2017

2-4pm and 6-8pm

Chorley Town Hall, Market Street,

Chorley, PR7 1DP

Mon 13th March 2017

2-4pm and 6-8pm

South Ribble Borough Council Civic Centre

West Paddock, Leyland, Lancashire, PR25 1DH



Our Health Our Care

What will happen during the March events?

Checking what we have heard

- ...is there anything missing?

More detail on the ideas for change

- Where have the ideas come from?
- What do you think about the ideas?

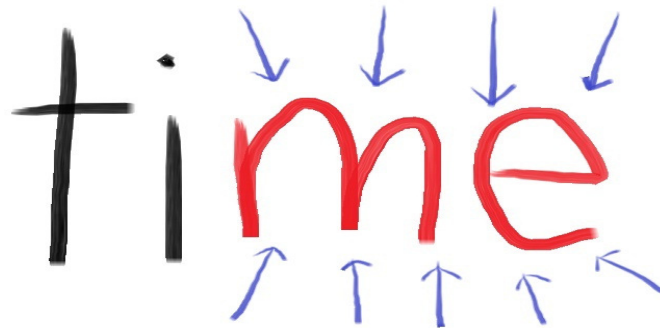


What can you do to help?

- Get involved in discussions and help us reach as many people in the community as possible
- Come to the public engagement events
- Share the dates!
- Help us put posters up in different places
- Take part in our upcoming online activities



Thank you for listening and are there any questions?





Contact us



Like us

[@OurHealthOurCareCL](#)



Tweet us

[@_OHOC](#)



Our Health Our Care

www.ourhealthourcarecl.nhs.uk/

01772 214323

ohoc.enquiries@nhs.net

Chorley House, Centurion Way, Leyland
Lancashire, PR26 6TT

This page is intentionally left blank

2017-2018 Private Sector Housing Assistance Policy

Presentation by

Martin Sample
Housing Team Leader

Date

13th February 2017

Private Sector Housing Assistance Policy

- Disabled Facilities Grant (DFG)
- Chorley Adaptation Grant (CAG)
- Integrated Home Improvement Services (IHIS)
- Key Recommendations
- Next Steps

Disabled Facilities Grant (DFG)

- Provides funds to help disabled residents to make adaptations to their home which promote independence.
- OT assesses clinical need - typical adaptations are wet room showers, stairlifts and ramps.
- Applications are subject to a financial assessment to confirm eligibility.
- Mandatory maximum per applicant is £30,000 but we are recommending in Chorley to increase this by further £10,000 subject to budget availability.

Chorley Adaptation Grant (CAG)

- Funding for adaptations in Chorley has increased from £370,000 in 2015/16 to £614,000 in 2016/17.
- We want to make best use of this budget – but are hampered by high numbers of customers failing DFG financial assessment.
- CAG would be a non-means tested adaptation (still subject to an Occupational Therapy assessment).
- It would be used when the required work is **one** of either a wet room shower, Stairlift, Through Floor Lift, Ceiling track hoist, wash-dry toilet.
- Also in exceptional circumstances could consider other adaptation items not usually available under DFG.

Integrated Home Improvement Services (IHIS)

- Two key services – **Handyperson** and **Minor Adaptations**
- **Handyperson** is free to people who meet the eligibility criteria
- Customers needing **Minor Adaptations** are assessed by an LCC Occupational Therapist. It is free. Typical Minor Adaptations are banister rails, external metal rails, adjustments to external steps.

Key Recommendations

- Flexible use of adaptations budget including introduction of Chorley Adaptation Grant (CAG) from April 2017.
- Increase DFG maximum grant from £30,000 up to £40,000 in exceptional circumstances.
- Introduce a 10% fee (to be added to applicant's grant award) for each DFG & CAG case approved from April 2017. The funds generated would be used to be either reinvested in the service or taken as a contribution to general balances.

Next Steps

- Consultation period is 1st February to 6th March.
- Customer comments to be emailed to housing.repairs@chorley.gov.uk or in writing to Home Improvement Agency (HIA) team, Civic Offices, Union street, Chorley PR7 1AL
- Full report available on request and via website: <https://democracy.chorley.gov.uk/documents/s71205/Report.pdf>
- Councillors to review comments in March 2017

This page is intentionally left blank